

For Lease

# 9180 SF FREESTANDING BLDG (FORMER GYMNASTICS FACILITY)

1501 Alafaya Trail, Orlando, FL 32828



## PROPERTY HIGHLIGHTS

- 🌿 The property is located within Waterford Lakes Professional Park located in the fast-growing region of east Orange County.
- 🌿 Building is constructed of tilt-up concrete walls, textured on both the interior and exterior surfaces. The building does not contain any unusual features or structures that would inhibit conversion to other uses.
- 🌿 Area Services residents of Waterford Lakes, Eastwood, Stoneybrook and Avalon Park.
- 🌿 **County:** Orange
- 🌿 **Rent:** Negotiable
- 🌿 **Lease Type:** NNN
- 🌿 **Traffic Counts:** 24,000 ADT

DEMOGRAPHICS	3 Mile	5 Mile
Population	97,949	223,489
Average HH Income	\$61,049	\$68,871
Average Age	34	34.9



**David Cobb**  
O 407 278 4594  
M 407 506 9058  
david@archonca.com

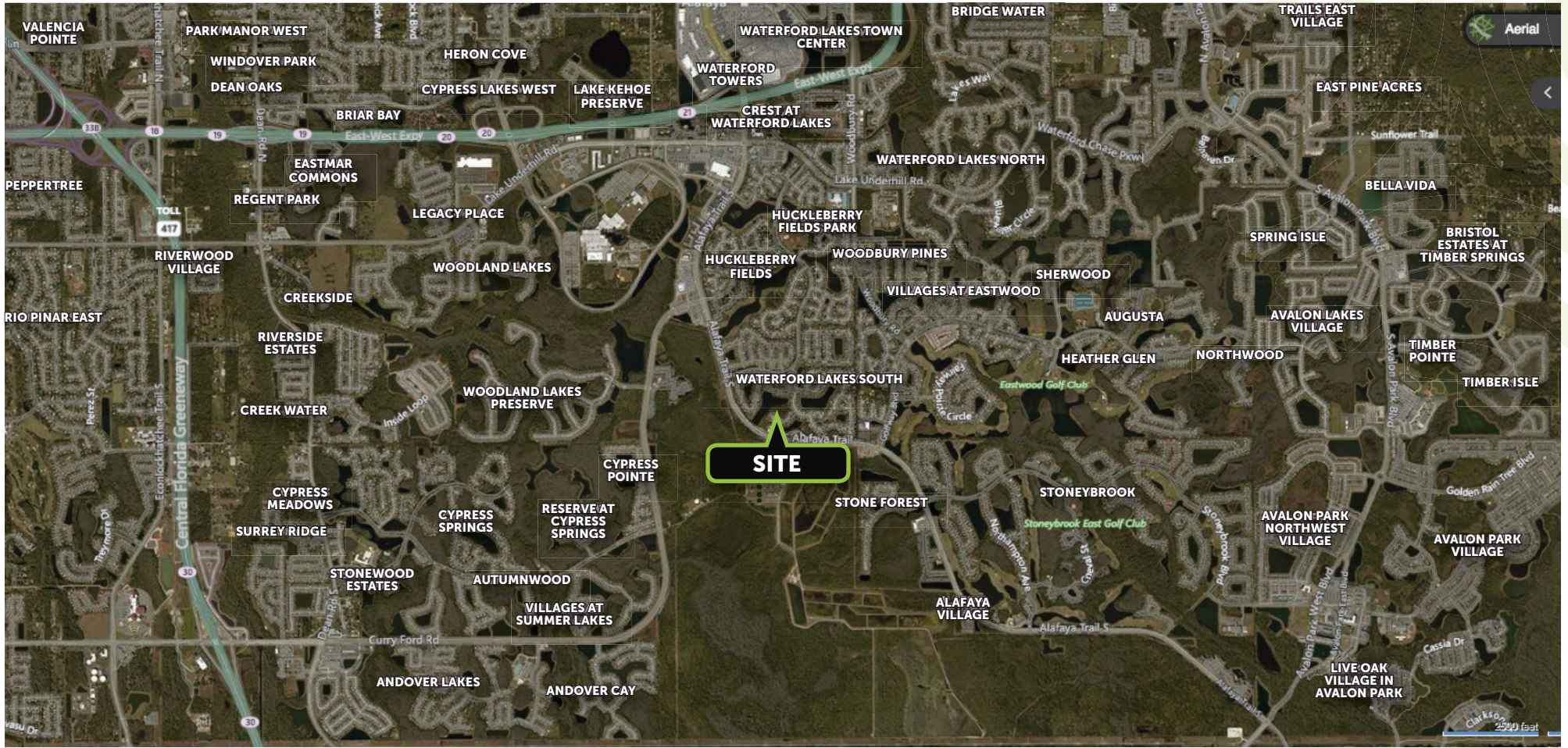
**Janet Galvin**  
O 407 278 5535 x 404  
C 407 484 9562  
janet@archonca.com

100 East Central Blvd, Suite #2  
Orlando, FL 32801  
P 407 278 5535 | F 407 545 2844  
[www.archonca.com](http://www.archonca.com)



# 9180 SF FREESTANDING BLDG (FORMER GYMNASIICS FACILITY)

1501 Alafaya Trail, Orlando, FL 32828



**ARCHON**  
COMMERCIAL ADVISORS

**David Cobb**  
O 407 278 4594  
M 407 506 9058  
david@archonca.com

**Janet Galvin**  
O 407 278 5535 x 404  
C 407 484 9562  
janet@archonca.com

100 East Central Blvd, Suite #2  
Orlando, FL 32801  
P 407 278 5535 | F 407 545 2844  
[www.archonca.com](http://www.archonca.com)

